

FROM DEPOSIT

**\$5K**

TO DOORSTEP

\*T&Cs apply

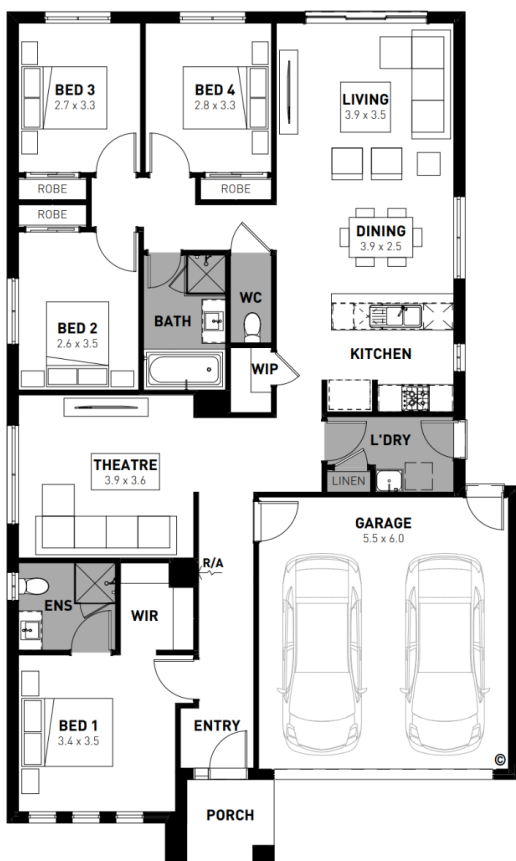


# Addison Boost 20

Fixed price package

**\$750,000\***

4 2 2



**Eastleigh, Cranbourne East – 318m<sup>2</sup>**  
**Lot 519 Kieffer Circuit**

- # Fixed site costs
- # Exposed aggregate driveway
- # Hudson facade included
- # Downlights to entry, kitchen, dining and living
- # Overhead cabinetry to kitchen
- # Quality floor coverings throughout
- # 2550mm high ceilings to ground floor
- # 20mm crystalline silica-free benchtops to kitchen, bath and ensuite
- # Westinghouse 900mm wide stainless-steel oven, cooktop and rangehood
- # 400mm X 600mm niche to showers
- # Lifestyle Essential Electrical pack
- # Roller blackout blinds (excluding wet areas and entry door sidelight)
- # 25 year structural guarantee & 12 month service warranty



Terms and conditions apply: \$5,000 deposit is only available on selected and approved house & land packages. House & land package must include painting, flooring, window treatments, driveway, crossover paved and fencing. The \$5,000 deposit consists of a \$2,500 HIA deposit and \$2,500 land deposit. Eligible customers will be required to pay deposits at Preliminary Works contract and must be eligible for the \$10,000 First Home Buyers Grant. This offer does not consider your personal needs and financial situation, and you should consider whether it is appropriate for you. Finance options are available through Resolve Finance Solutions PTY LTD trading as Resolve Finance ABN 65 079 545 378 (Australian Credit License 385487). Funding arranged through Bluebay Homeloans Pty Ltd ABN 62 127 824 524 (Australian Credit Licence 389250). Lenders terms, conditions, risk fees and other applicable charges apply. Product structure is first loan with a 30-year loan term and second loan with a 10-year loan term. This offer is not available in conjunction with any other promotions or incentives. Making changes to inclusions or creating a custom package may not qualify, please speak to a New Homes Consultant for further information. Images are for illustrative purposes only. The 'Boost' promotion is only available to customers who sign a Preliminary Works Contract (PWC) between April 8, 2026 and June 30, 2026. Pricing includes advertised façade within the base price. This offer cannot be modified, substituted, redeemed for cash or applied to the base price of the home. Homebuyers Centre reserves the right to alter both the terms of the offer and to end the offer at any time without notice. The building practitioner is ABN Group (Vic) Pty Ltd. Trading as Homebuyers Centre. CDB-U 49215.

**Homebuyers Centre**

**131 751**

**info.vic@homebuyers.com.au**