



FIXED PRICE* HOME AND LAND

\$750,660*

*Price fixed based on Forecast Land Title Registration Date

LOT 3038 WIRRINDA DRIVE

FIVE FARMS CLYDE NORTH

CALLULA 17 | CHATEAU FACADE

HOME SIZE: 17sq | 155m²

LAND SIZE: 12.5m WIDE BY 32m DEEP | 400m²

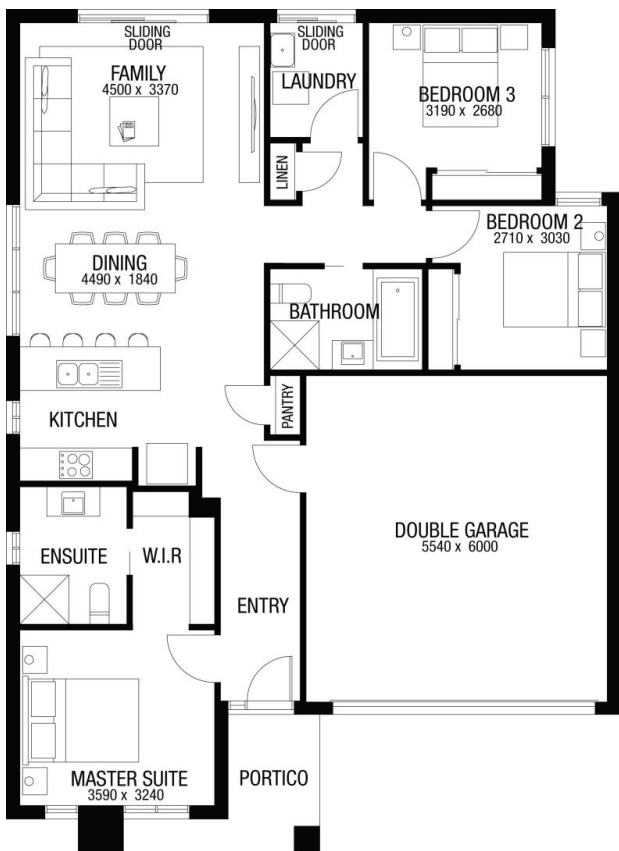
FORECAST LAND TITLE REGISTRATION: SEP 2026



BUILT TO OUR BASE SPECIFICATIONS AND LAND, PLUS:

- ✓ \$20k HomeSolution build savings applied![^]
- ✓ \$10K First Home Owners Grant for eligible First Home Buyers[^]
- ✓ A roof made from COLORBOND® steel
- ✓ Fixed site costs (no more to pay!)
- ✓ 7 star energy rating
- ✓ Flooring to the entire home
- ✓ Double glazed aluminium windows
- ✓ Ducted gas heating
- ✓ All developer requirements
- ✓ Lifetime Structural Guarantee#
- ✓ PLUS so much more!
- ✓ Bushfire Upgrades

Price excludes upgrade items above standard specification such as feature render and bricks, front entrance timber decking, front entry door, brick infills above garage, external lighting, fencing, concrete paths and driveway. Façade image may also contain items not supplied by Metricon Homes, namely landscaping and planter boxes.



ALEX NOULAS

ALEXNOULAS@HOMESOLUTION.COM.AU
0421 258 800

homesolution

