



**ASPENDALE 226**  
**3015 Terrene Street**  
**Five Farms Estate, Clyde North**

**\$777,030**

4 2 2

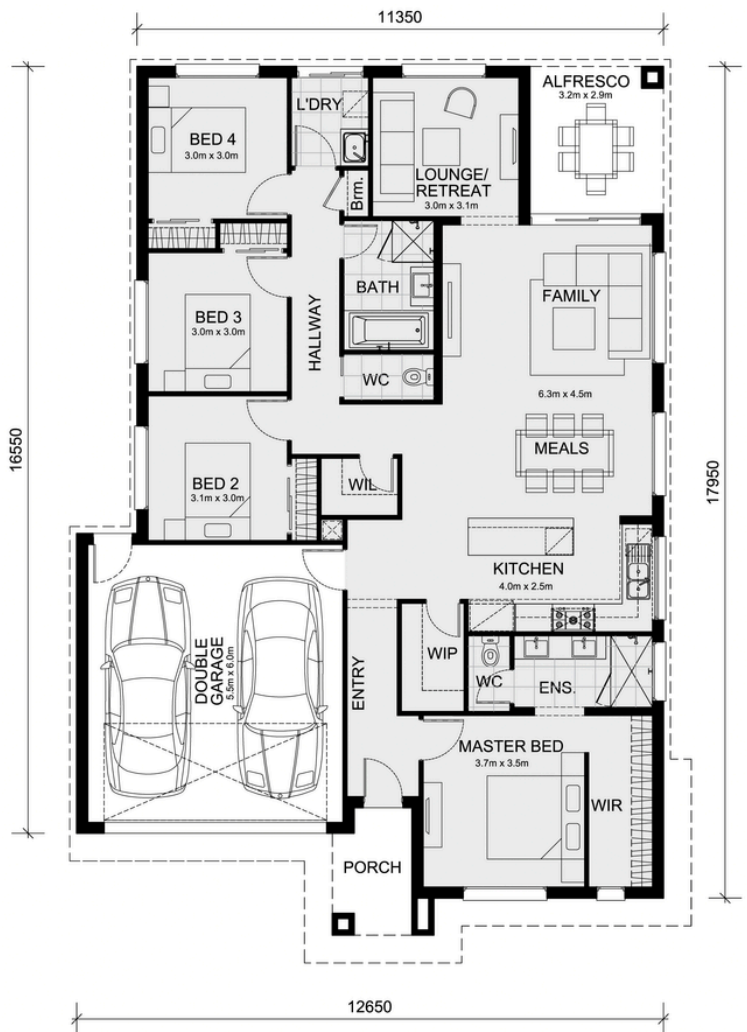
The Allendale 226 and a 392 sqm piece of land facing south are located at Five Farms Estate, Clyde North.

**Inclusions:**

- Fixed Site Costs (including BAL 12.5).
- High-Quality Finishes: Timber-look laminate, carpet, floor tiles, and stone benchtops in the kitchen and bathrooms.
- Appliances: 900 mm oven, cooktop & rangehood (600 mm for homes < 20 sq), cooktop, rangehood, dishwasher, and microwave.
- Energy Efficient: 7-star energy rating with included heating and hot water unit.
- Lighting: LED downlights throughout.
- Security & Convenience: Internal garage access with two remotes, flyscreens on windows, and a termite management system.
- First Home Buyers: No stamp duty and eligibility for the \$10,000 government grant.

**Disclaimer:**

All plans & facades are provided for illustrative purposes only & are subject to change. Mimosahomes reserves the right to modify plans, specifications, & prices without prior notice. Package prices are based on a standard facade, standard inclusions, & the availability of suitable land. Some developer or estate requirements may not be included. Images of facades and inclusions may show non-standard items that are not part of the package price. All dimensions provided are approximate. Landscaping, fencing, decking, planter boxes, driveways, and pathways are not included unless specifically stated. Home designs may need to be adjusted to comply with applicable regulations.



**Area Details**

Land Size 392 sqm Building Size 208 sqm

**Contact: Adam Keleher**

adamk@mimosahomes.com.au

0439 779 909

www.mimosahomes.com.au