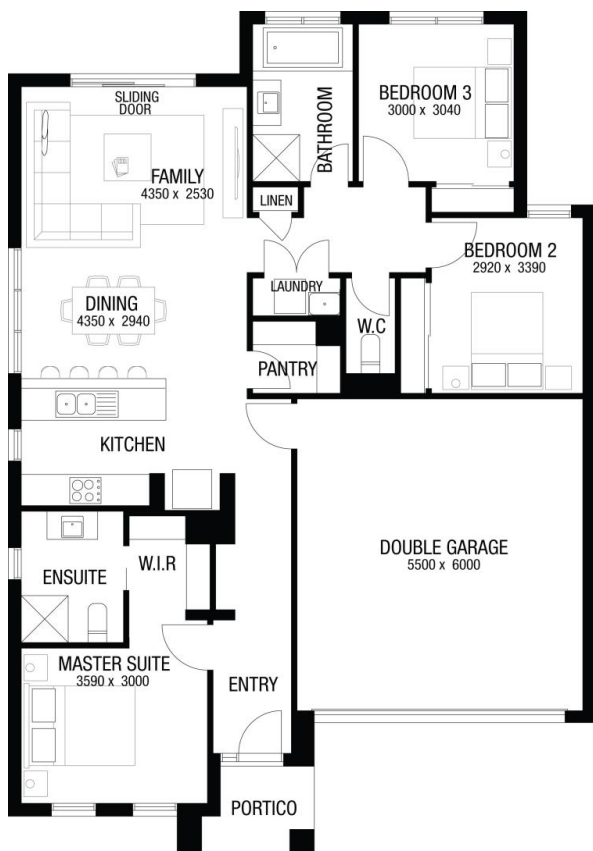




Price excludes upgrade items above standard specification such as feature render and bricks, front entrance timber decking, front entry door, brick infills above garage, external lighting, fencing, concrete paths and driveway. Façade image may also contain items not supplied by Metricon Homes, namely landscaping and planter boxes.



FIXED PRICE* HOME AND LAND

\$732,880*

*Price fixed based on Forecast Land Title Registration Date

LOT 3058 SLIDER ROAD

BOTANICAL MICKLEHAM 3064

LUCAS 17 | KINGSTON FACADE

HOME SIZE: 17sq | 156m²

LAND SIZE: 14m WIDE BY 25m DEEP | 350m²

FORECAST LAND TITLE REGISTRATION: NOV 2026



BUILT TO OUR BASE SPECIFICATIONS AND LAND, PLUS:

- ✓ Fully rendered home#
- ✓ Roof made from COLORBOND® steel#
- ✓ Refrigerated cooling#
- ✓ 7 star energy rating
- ✓ Fixed site costs (no more to pay)
- ✓ 2550mm ceiling height to ground floor
- ✓ Feature front door
- ✓ Stylish 900mm stainless steel appliances
- ✓ Aluminium double glazed windows
- ✓ Lifetime Structural Guarantee#
- ✓ PLUS so much more!
- ✓ Bushfire Upgrades



ADAM ASSAD

ADAMASSAD@METRICON.COM.AU

0455800015

LUXURY

The Freedom All-Inclusive Series

FREEDOM
m
METRICON