



ST HELENA
PLACE

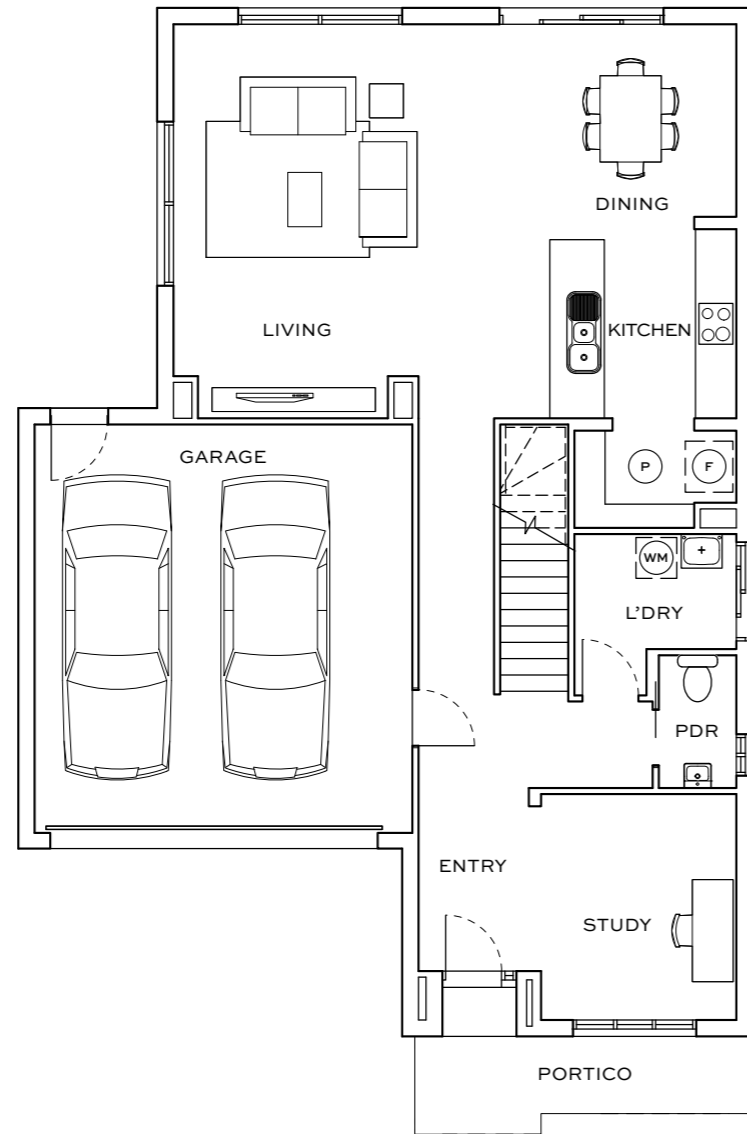
CASSINIA | FACADE III

Cassinia Facade III

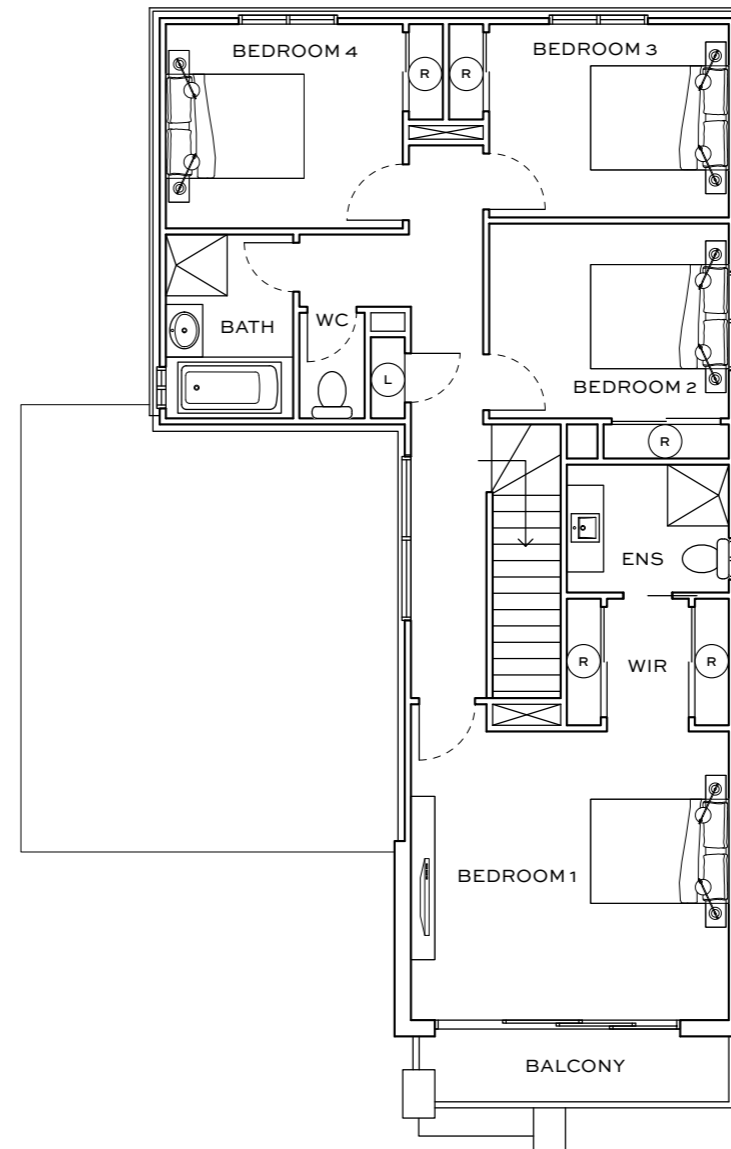
 4 BEDROOMS

 2.5 BATHROOMS

 2 CARPARKS



GROUND FLOOR



FIRST FLOOR

| AREA SCHEDULE | M ² |
|---------------------|----------------|
| GROUND FLOOR AREA | 97.70 |
| FIRST FLOOR AREA | 98.52 |
| TOTAL INTERNAL AREA | 196.22 |
| GARAGE AREA | 36.56 |
| PORTICO AREA | 7.28 |
| BALCONY AREA | 5.81 |
| TOTAL GROSS AREA | 240.06 |

| KEY | |
|-----------------------|------|
| FRIDGE / FREEZER | (F) |
| LINEN | (L) |
| PANTRY | (P) |
| ROBE | (R) |
| WASHING MACHINE SPACE | (WM) |



This floorplan is subject to change, please refer to the Sales Consultant for actual floorplan and inclusions.

STHELENAPLACE.COM.AU
1800 900 300

132 Diamond Creek Rd, St Helena VIC 3088

MANAGED AND MARKETED BY



DEVELOPED BY



The information contained in this promotional material is for illustration purposes only, is subject to change, and cannot form part of an offer or contract. Statements, figures, calculations, plans, still images, moving images and representations are indicative only. The images (including landscapes) are artists impressions and are indicative only (including with respect to colours). Plans are not drawn to scale. The appearance and dimensions of the property, and the inclusion, appearance, dimensions and placement of the fittings in the property, may change during development. Prospective purchasers must rely on their own enquiries and documents included in the contract of sale. St Helena Place is developed by Far East Land and Housing Development Pte Ltd ABN 97 161 287 142, managed and marketed by Satterley Property Group Pty Ltd ACN 009 054 979. Printed October 2023.