

FIXED PRICE

House & Land Package



FIXED PRICE
GUARANTEE

SPEND \$5K & RECEIVE
\$10K
WORTH OF UPGRADES

STRUCTURAL
LIFETIME
GUARANTEE

KIAMA 18 | EMERGE RANGE

\$675,284*

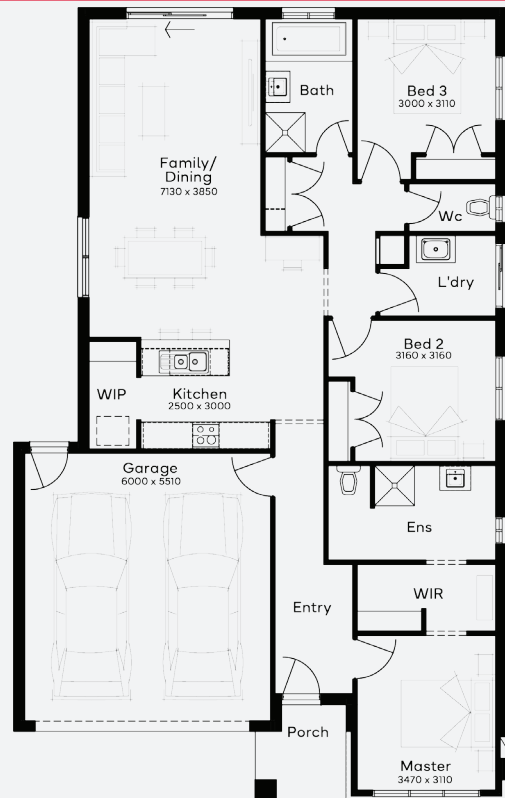
Lot 508 , Donnybrook
Heartford Estate (400m²)



FIRST HOME OWNERS - \$665,284

INCLUSIONS

- + Fixed price Site Costs
- + Developer & council requirements
- + Photovoltaic panels with inverter
- + Feature front entry door
- + Colorbond Sectional garage door & remote controls
- + Floor coverings to entire house
- + 20mm Caesarstone arris edge benchtop to kitchen
- + Quality stainless steel cooktop & oven
- + Ducted Heating
- + Plus much more!



Heartford
DONNYBROOK

For enquiries please contact: **Julia Arena - 0432 296 901**

simonds.com.au



All Fixed Price House and Land packages are subject to approval by the Developer and Council. These packages are based on Simonds standard floor plan with preferred siting and without any alterations. The Package Price does not include stamp duty, government charges, legal fees, or bank charges. Additional costs, including a Community Infrastructure Levy and Asset Protection Permit, are not included in the package pricing. Any alterations to the standard floor plan may result in additional charges. The land price, for the land being the subject of the Fixed Price House and Land package, and its availability must be confirmed by Simonds prior to making a purchase. Simonds reserves the right to withdraw or amend the pricing, inclusions, and promotions for the Fixed Price House and Land package at any time without prior notice. *Terms and conditions apply, for more information, please refer to our terms and conditions at www.simonds.com.au/vic/terms-conditions. This package is applicable to the VIC - Emerge range only. Images shown are for illustrative purposes only and may not represent the final product such as lighting, window furnishings, timber look garage door & timber windows. Façade details including entry door and window sizing may vary between house types. Pricing also excludes features such as fencing, landscaping, letterbox, decking, driveway